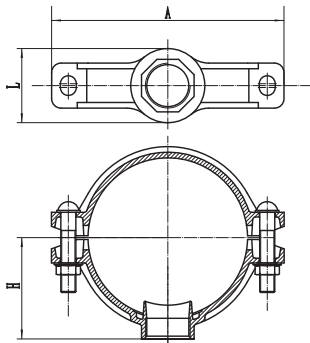


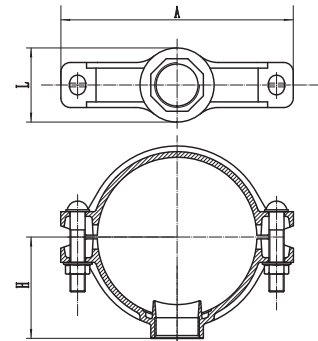
Threaded Mechanical Tee XGQT04



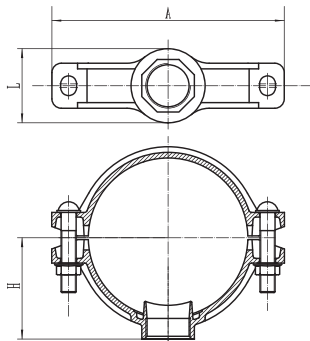
Nominal Size mm/in	Pipe O.D mm/in	Dimensions			Pipehole Dia (Φ-mm)	Bolt/Nut Size (mm)	Working pressure Psi
		A mm	L mm	H mm			
50x15	60.3x21.3	120	54	50	30	3/8x2 (M10x50)	300
2x1/2	2.375x0.825						
50x20	60.3x26.7	120	54	50	30		
2x3/4	2.375x1.05						
50x25	60.3x33.7	120	64	50	38		
2x1	2.375x1.327						
50x32	60.3x42.4	120	72	55	46		
2x1 1/4	2.375x1.669						
50x40	60.3x48.3	120	72	63	46		
2x1 1/2	2.375x1.9						
65x15	73x21.3	139	54	58	30		
2 1/2 x 1/2	2.375x0.825						
65x20	73x26.7	139	54	58	30		
2 1/2 x 3/4	2.875x1.05						
65x25	73.0x33.7	139	65	60	38		
2 1/2 x 1	2.875x1.327						
65x32	73.0x42.4	139	72	60	46		
2 1/2 x 1 1/4	2.875x1.669						
65x40	73.0x48.3	139	79	60	53		
2 1/2 x 1 1/2	2.875x1.9						
65x15	76.1x21.3	139	54	58	30		
2 1/2 x 1/2	3x0.825						
65x20	76.1x26.7	139	54	58	30		
2 1/2 x 3/4	3x1.05						
65x25	76.1x33.7	139	65	60	38		
2 1/2 x 1	3x1.327						
65x32	76.1x42.4	139	72	60	46		
2 1/2 x 1 1/4	3x1.669						
65x40	76.1x48.3	139	79	60	53		
2 1/2 x 1 1/2	3x1.9						
80x15	88.9x21.3	155	59	66.5	30		
3x1/2	3.5x0.825						
80x20	88.9x26.7	155	59	66.5	30		
3x3/4	3.5x1.05						
80x25	88.9x33.7	155	64	67	38		
3x1	3.5x1.327						
80x32	88.9x42.4	155	72	67	46		
3x1 1/4	3.5x1.669						
80x40	88.9x48.3	155	79	67	53		
3x1 1/2	3.5x1.9						
80x50	88.9x60.3	155	90	67	64		
3x2	3.5x2.375						
100x25	108.1x33.7	167	76	76	38		
4x1	4.250x1.327						
100x32	108.0x42.4	167	83	76	46		
4x1 1/4	4.25x1.669						
100x40	108.0x48.3	167	90	76	53		
4x1 1/2	4.25x1.9						
100x50	108.0x60.3	167	100	78	64		
4x2	4.25x2.375						

**Threaded Mechanical Tee
XGQT04**

Nominal Size mm/in	Pipe O.D mm/in	Dimensions			Pipehole Dia (Φ-mm)	Bolt/Nut Size (mm)	Working pressure Psi
		A mm	L mm	H mm			
100x65 4x2 1/2	108.0x76.1 4.25x3	167	117	105	80	1/2x2-5/8 (M12x65)	300
100x25 4x1	114.3x33.7 4.5x1.327						
100x32 4x1 1/4	114.3x42.4 4.5x1.669	181	72	79	46		
100x40 4x1 1/2	114.3x48.3 4.5x1.9						
100x50 4x2	114.3x60.3 4.5x2.375	181	90	79	64		
100x65 4x2 1/2	114.3x76.1 4.5x3						
100x80 4x3	114.3x88.9 4.5x3.5	181	129	83	89		
125x25 5x1	133.0x33.7 5.250x1.327						
125x32 5x1 1/4	133.0x42.4 5.25x1.669	205	83	89	46		
125x40 5x1 1/2	133.0x48.3 5.25x1.9						
125x50 5x2	133.0x60.3 5.25x2.375	205	100	89	64		
125x65 5x2 1/2	133.0x76.1 5.25x3						
125x80 5x3	133.0x88.9 5.25x3.5	205	129	94	92		
125x25 5x1	139.7x33.7 5.5x1.327						
125x32 5x1 1/4	139.7x42.4 5.5x1.669	212	83	93	46		
125x40 5x1 1/2	139.7x48.3 5.5x1.9					212	
125x50 5x2	139.7x60.3 5.5x2.375	212	100	93	64		
125x65 5x2 1/2	139.7x76.1 5.5x3					212	
125x80 5x3	139.7x88.9 5.5x3.5	212	129	95	89		
125x25 5x1	141.3x33.7 5.563x1.327					212	
125x32 5x1 1/4	141.3x42.4 5.563x1.669	212	83	93	46		
125x40 5x1 1/2	141.3x48.3 5.563x1.9					212	
125x50 5x2	141.3x60.3 5.563x2.375	212	100	93	64		
125x65 5x2 1/2	141.3x76.1 5.563x3					212	
125x80 5x3	141.3x88.9 5.563x3.5	212	136	118	89		



Threaded Mechanical Tee XGQT04



Nominal Size mm/in	Pipe O.D mm/in	Dimensions			Pipehole Dia (Φ-mm)	Bolt/Nut Size (mm)	Working pressure Psi
		A mm	L mm	H mm			
150x25	159x33.7	233	76	101.5	38	9/16x3 (M14x75)	300
6x1	6.250x1.327						
150x32	159.0x42.4	233	83	101.5	46		
6x1 1/4	6.250x1.669						
150x40	159.0x48.3	233	90	101.5	53		
6x1 1/2	6.250x1.9						
150x50	159.0x60.3	233	100	101.5	64		
6x2	6.250x2.375						
150x65	159.0x76.1	233	117	105.5	80		
6x2 1/2	6.250x3						
150x80	159.0x88.9	233	129	105.5	92		
6x3	6.250x3.5						
150x100	159.0x114.3	233	157	110	118		
6x4	6.250x4.5						
150x25	165.1x33.7	248	64	106	38	5/8x3-1/3 (M16x85)	
6x1	6.5x1.327						
150x32	165.1x42.4	248	72	106	46		
6x1 1/4	6.5x1.669						
150x40	165.1x48.3	248	79	106	53		
6x1 1/2	6.5x1.9						
150x50	165.1x60.3	248	90	106	64		
6x2	6.5x2.375						
150x65	165.1x76.1	248	107	106	70		
6x2 1/2	6.5x3						
150x80	165.1x88.9	248	118	108	89		
6x3	6.5x3.5						
150x100	165.1x114.3	239	157	110	114		
6x4	6.5x4.5						
150x25	168.3x33.7	248	64	106	38	5/8x3-1/3 (M16x85)	
6x1	6.625x1.327						
150x32	168.3x42.4	248	72	106	46		
6x1 1/4	6.625x1.669						
150x40	168.3x48.3	248	79	106	53		
6x1 1/2	6.625x1.9						
150x50	168.3x60.3	248	90	106	64		
6x2	6.625x2.375						
150x65	168.3x76.1	248	117	128	70		
6x2 1/2	6.625x3						
150x80	168.3x88.9	248	136	131	89		
6x3	6.625x3.5						
150x100	168.3xRc4	248	162	139.5	114		
6x4	6.625x4.5						
200x25	219.1x33.7	311	76	131	38	5/8x3-1/3 (2-M16x85)	
8x1	8.625x1.327						
200x32	219.1x42.4	311	83	134	46		
8x1 1/4	8.625x1.669						
200x40	219.1x48.3	311	90	134	53		
8x1 1/2	8.625x1.9						
200x50	219.1x60.3	311	100	134	64		
8x2	8.625x2.375						
200x65	219.1x76.1	311	117	156	70		
8x2 1/2	8.625x3						
200x80	219.1x88.9	311	136	158.5	89		
8x3	8.625x3.5						
200x100	219.1x114.3	311	162	167	114		
8x4	8.625x4.5						
250x65	273.0x76.1	379	117	159	80	3/4x3-1/2 (M20x90)	
10x2 1/2	10.75x3						
250x80	273.0x88.9	379	129	162	92		
10x3	10.75x3.5						