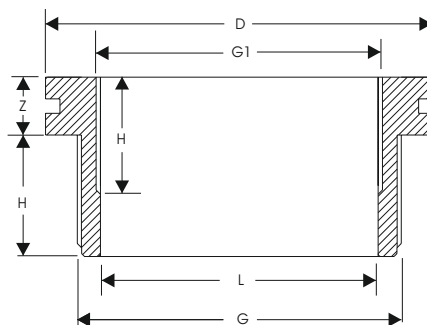


Riduzione corta M-F

Male-female reducing bush

15041


G x G1	D	L	H	H1	Z
Ø 3/4" x 1/2"	31	17.5	19.5	19	10.5
Ø 1" x 1/2"	38	17.5	21.5	17.5	10.5
Ø 1" x 3/4"	38	22.5	21.5	19.5	10.5
Ø 1"1/4 x 1/2"	48.5	29	24.5	16	10.5
Ø 1"1/4 x 3/4"	48.5	28	24.5	18	10.5
Ø 1"1/4 x 1"	48.5	29	24.5	20	10.5
Ø 1"1/2 x 1/2"	54	29	24	18	11
Ø 1"1/2 x 3/4"	54	34	24	18.5	11
Ø 1"1/2 x 1"	54	29.5	24	20.5	11
Ø 1"1/2 x 1"1/4	54	37	24	25.5	11
Ø 2" x 3/4"	64.5	45.8	26	19	15.5
Ø 2" x 1"	64.5	46.5	26	22	15.5
Ø 2" x 1"1/4	64.5	38	26	25	15.5
Ø 2" x 1"1/2	64.5	43.5	26	26	15.5
Ø 2"1/2 x 2"	80	60	28.5	24.5	15.5
Ø 3" x 1"	93	67.5	32	21	17.5
Ø 3" x 2"	93	68.5	32	26	17.5
Ø 3" x 2"1/2	93	70.5	32	30.5	17.5
Ø 4" x 2"	135	88	43	25.5	21
Ø 4" x 3"	135	88	43	34	21