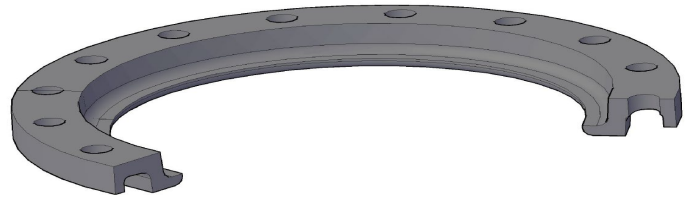
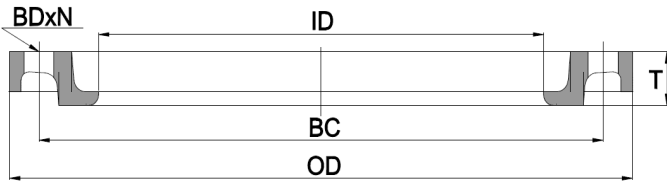


Ductile Iron Backup Rings/Flanges

Material: ASTM A536 G65-45-12, Finish: Fusion Bonded Epoxy Coated, Use with HDPE Flange Adapters



IPS Pipe Dia.	Product Code	Outside Dia.	Inside Dia.	Flange Thick.	Bolt Hole No.	Bolt Hole Dia.	Bolt Hole Circle	Unit Weight	Pressure Rating
Inch		O.D.	I.D.	T	N	B.D.	B.C.	LBS	PSI
2"	DIBR-SDR7-02D	6.00	2.60	0.75	4	0.75	4.75	2.80	350
2"	DIBR-SDR11-02B	6.00	2.60	0.50	4	0.75	4.75	1.78	200
3"	DIBR-SDR7-03D	7.50	3.75	0.85	4	0.75	6.00	4.00	350
3"	DIBR-SDR11-03B	7.50	3.75	0.53	4	0.75	6.00	2.68	200
4"	DIBR-SDR7-04D	9.00	4.75	0.92	8	0.75	7.50	5.60	350
4"	DIBR-SDR11-04B	9.00	4.75	0.55	8	0.75	7.50	3.80	200
6"	DIBR-SDR7-06D	11.00	6.88	1.00	8	0.88	9.50	8.00	350
6"	DIBR-SDR11-06B	11.00	6.88	0.63	8	0.88	9.50	5.13	200
8"	DIBR-SDR7-08D	13.50	8.88	1.12	8	0.88	11.75	12.5	350
8"	DIBR-SDR11-08B	13.50	8.88	0.85	8	0.88	11.75	10.0	200
10"	DIBR-SDR7-10D	16.00	11.00	1.22	12	1.00	14.25	16.8	350
10"	DIBR-SDR11-10B	16.00	11.00	0.98	12	1.00	14.25	13.8	200
12"	DIBR-SDR7-12D	19.00	13.15	1.48	12	1.00	17.00	26.8	350
12"	DIBR-SDR11-12B	19.00	13.15	1.25	12	1.00	17.00	23.2	200
14"	DIBR-SDR7-14D	21.00	14.40	1.62	12	1.13	18.75	38.5	350
14"	DIBR-SDR11-14B	21.00	14.40	1.38	12	1.13	18.75	36.0	200
16"	DIBR-SDR7-16D	23.50	16.40	1.82	16	1.13	21.25	49.0	350
16"	DIBR-SDR11-16B	23.50	16.40	1.65	16	1.13	21.25	44.0	200
18"	DIBR-SDR7-18D	25.00	18.40	1.82	16	1.25	22.75	52.0	350
18"	DIBR-SDR11-18B	25.00	18.40	1.67	16	1.25	22.75	49.5	200
20"	DIBR-SDR7-20D	27.50	20.50	2.00	20	1.25	25.00	67.0	350
20"	DIBR-SDR11-20B	27.50	20.50	1.81	20	1.25	25.00	61.0	200
22"	DIBR-SDR11-22B	29.50	22.50	2.00	20	1.38	27.25	73.0	200
24"	DIBR-SDR7-24D	32.00	24.50	2.18	20	1.38	29.50	96.0	350
24"	DIBR-SDR11-24B	32.00	24.50	2.17	20	1.38	29.50	89.0	200
28"	DIBR-SDR11-28B	36.50	28.60	2.50	28	1.38	34.00	124.0	200
30"	DIBR-SDR11-30B	38.75	30.60	2.60	28	1.38	36.00	148.0	200
32"	DIBR-SDR11-32B	41.75	32.60	2.75	28	1.63	38.50	178.0	200
36"	DIBR-SDR11-36B	46.00	36.60	3.15	32	1.63	42.75	238.0	200
42"	DIBR-SDR11-42B	53.00	42.60	3.55	36	1.63	49.50	345.0	200
48"	DIBR-SDR11-48B	59.50	48.60	3.95	44	1.63	56.00	458.0	200
54"	DIBR-SDR11-54B	66.50	54.80	4.15	44	1.88	62.75	580.0	200