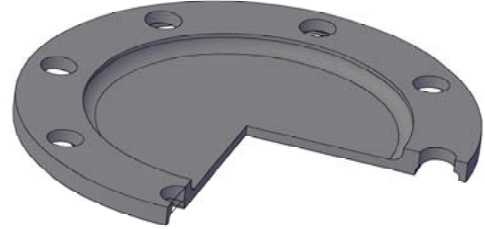
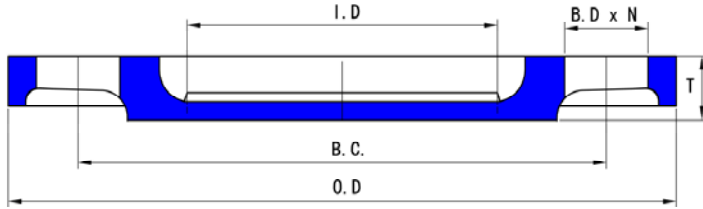




GenorD Ductile Iron Blind Flanges For use on HDPE Flange Adapters



GenorD Ductile Iron Blind Flanges are specially used with HDPE flange adapters. Base on the unique structure design, the Ductile Iron Blind Flanges have the performance of less weight, high mechanical strength and long term anticorrosion.

Finish: Powder Coated, Hot-dip Galvanized or Painted on requirement.

IPS Pipe Dia.	Product Code	Outside Dia.	Thick ness	Bolt No.	Bolt Hole Dia.	Bolt Hole Circle	Working Pressure Rating
Inch		O.D.	T	N	B.D.	B.C.	PSI
3/4"	DIBR-SDR7-0075D	3.88	0.51	4	0.5	2.75	267
1"	DIBR-SDR7-0100D	4.25	0.56	4	0.63	3.13	267
1 1/4"	DIBR-SDR7-0125D	4.63	0.63	4	0.63	3.50	267
1 1/2"	DIBR-SDR7-0150D	5.00	0.69	4	0.63	3.88	267
2"	DIBR-SDR7-02D	6.00	0.73	4	0.75	4.75	267
2"	DIBR-SDR11-02B	6.00	0.50	4	0.75	4.75	160
3"	DIBR-SDR7-03D	7.50	0.85	4	0.75	6.00	267
3"	DIBR-SDR11-03B	7.50	0.53	4	0.75	6.00	160
4"	DIBR-SDR7-04D	9.00	0.90	8	0.75	7.50	267
4"	DIBR-SDR11-04B	9.00	0.55	8	0.75	7.50	160
6"	DIBR-SDR7-06D	11.00	0.98	8	0.88	9.50	267
6"	DIBR-SDR11-06B	11.00	0.63	8	0.88	9.50	160
8"	DIBR-SDR7-08D	13.50	1.13	8	0.88	11.75	267
8"	DIBR-SDR11-08B	13.50	0.85	8	0.88	11.75	160
10"	DIBR-SDR7-10D	16.00	1.23	12	1.00	14.25	267
10"	DIBR-SDR11-10B	16.00	0.98	12	1.00	14.25	160
12"	DIBR-SDR7-12D	19.00	1.46	12	1.00	17.00	267
12"	DIBR-SDR11-12B	19.00	1.25	12	1.00	17.00	160
14"	DIBR-SDR11-14B	21.00	1.38	12	1.13	18.75	160
16"	DIBR-SDR11-16B	23.50	1.65	16	1.13	21.25	160
18"	DIBR-SDR11-18B	25.00	1.67	16	1.25	22.75	160
20"	DIBR-SDR11-20B	27.50	1.82	20	1.25	25.00	160
22"	DIBR-SDR11-22B	29.50	2.00	20	1.38	27.25	160
24"	DIBR-SDR11-24B	32.00	2.17	20	1.38	29.50	160

Working Pressure Rating is for free-floating backing rings on HDPE flange adapters and includes safety factor of two.