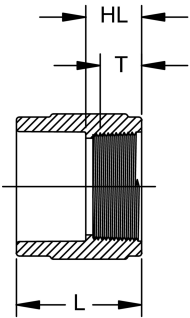
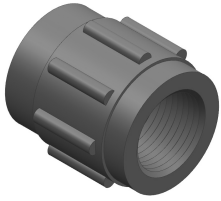


## Female Adapter (S x FPT)



Size (inch)	P/L	Code	Pack Qty	HL (inch)	L (inch)	T (inch)	Design
¼	25	<b>9835-002</b>	50	0.75	1.43	0.58	HS
½	25	<b>9835-005</b>	25	0.91	1.80	0.75	HS
¾	25	<b>9835-007</b>	20	0.95	1.96	0.79	HS
1	25	<b>9835-010</b>	25	1.11	2.27	0.98	HS
1 ¼	25	<b>9835-012</b>	10	1.18	2.44	1.02	HS
1 ½	25	<b>9835-015</b>	10	1.19	2.59	1.03	HS
2	25	<b>9835-020</b>	5	1.25	2.76	1.06	HS
2 ½	H02	<b>9835-025S</b>	5	1.62	3.25	1.41	HS
3	25	<b>9835-030</b>	5	1.91	3.80	1.65	HS
4	25	<b>9835-040</b>	5	2.02	4.29	1.74	HS
6	A34	<b>9835-060N</b>	1	4.50	7.50	1.51	
8	A34	<b>9835-080N</b>	1	4.25	8.50	1.71	
10	A34	<b>9835-100N</b>	1	5.00	10.00	2.00	
12		<b>9835-120N</b>	1	6.00	11.13	2.13	

The technical data are not binding. They neither constitute expressly warranted characteristics nor guaranteed properties nor a guaranteed durability. They are subject to modification. Our General Terms of Sale apply.

Georg Fischer Piping Systems Ltd, Postfach, CH-8201 Schaffhausen/Switzerland

Phone +41 -(0)52-631 1111

e-mail: [info.ps@georgfischer.com](mailto:info.ps@georgfischer.com)

Internet: <http://www.gfps.com>